

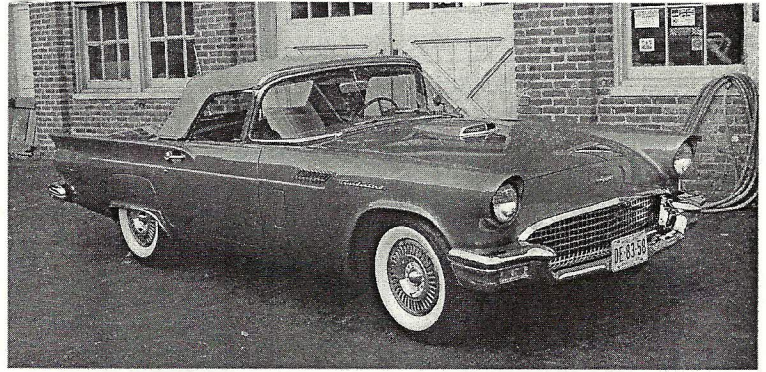
## Gary and Paula Report On A Visit To Pa. Automobile Restorer

Gary and Chesapeake Region Treasurer, Paula Ruby report they recently accepted an invitation to attend an 'open house' at Prueitt Automotive Restoration, located in the Pennsylvania Borough of Glen Rock, in York County.

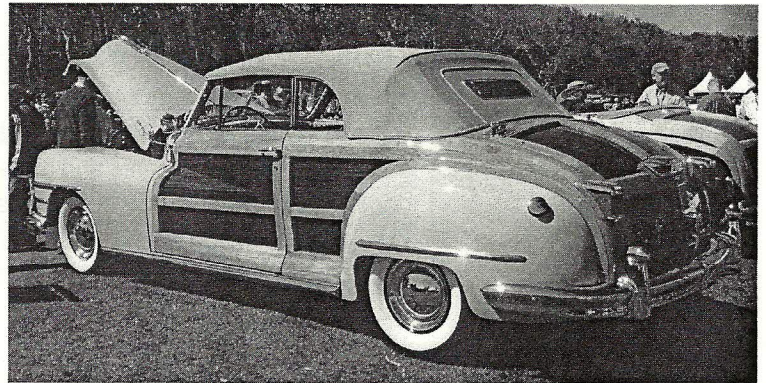
The company was founded by Al Prueitt (1924-2013) and today is operated by his sons. Gary states "they do excellent restorations" in their 10,000 square foot facility. Prueitt provides full service restorations including, upholstery, mechanical, electrical, engine rebuilding, body work and custom interior and exterior painting.

Currently, the company has many high-end vehicles under restoration including a rare European Hispano-Suiza two door sedan, a '60's era Mercedes-Benz roadster convertible and a early model Nash-Healy roadster convertible.

A couple of the more recent vehicles they have restored are a 1950 Dodge Farm Truck, and a 1960 Volkswagen Beetle. Prueitt & Sons, has restored vehicles for customers all over the United States. Many of their customers hail from Maryland and they count several members of Chesapeake Region A.A.C.A. as loyal customers. Limited space does not permit us to include more than two recent examples, however, for more information visit Prueitt's excellent website: [alprueittandsons.com/](http://alprueittandsons.com/)



1957 Ford Thunderbird Convertible



1947 Chrysler Town & Country Convertible

### "What The Heck Is That?"

Dan Materazzi and I were sitting next to each other beside my '54 DeSoto at the 'Holy Donut' cruise-in on Sunday morning, June 1 in Burtonsville, Maryland. Dan brought his gorgeous 1958 Chevrolet Corvette with factory fuel-injection and it was drawing a crowd of it's own.

Dan, says, "I just caught a glimpse of a large black limousine type car, but I don't know what it is".

I said, "Was it a bustle back"? To which Dan replied, "Yes, I think so", "I saw it a few minutes ago but I have no idea what make it is". A few minutes later, we got out of our chairs and walked up to look at another vehicle, and Dan spied the dark, mysterious sedan. "There it is"!

We looked the car over very thoroughly and neither of us could tell what it was. The exterior was completely free of nomenclature...*except*, a highly stylized capital 'D,' in the center of each hubcap. It was definitely a European vehicle but it was left-hand drive, just like our cars. My guess was 'Rover.' I added: "I believe I've seen members of the British Royal Family riding in one of these". Dan agreed, he also believed it was from the U.K. Other people were also stumped as to what it was. From the pictures to the right, what the heck do you think it is? *No cheating!* Answer on page 7.--Bill Wurzell



Front View



Three-quarter View